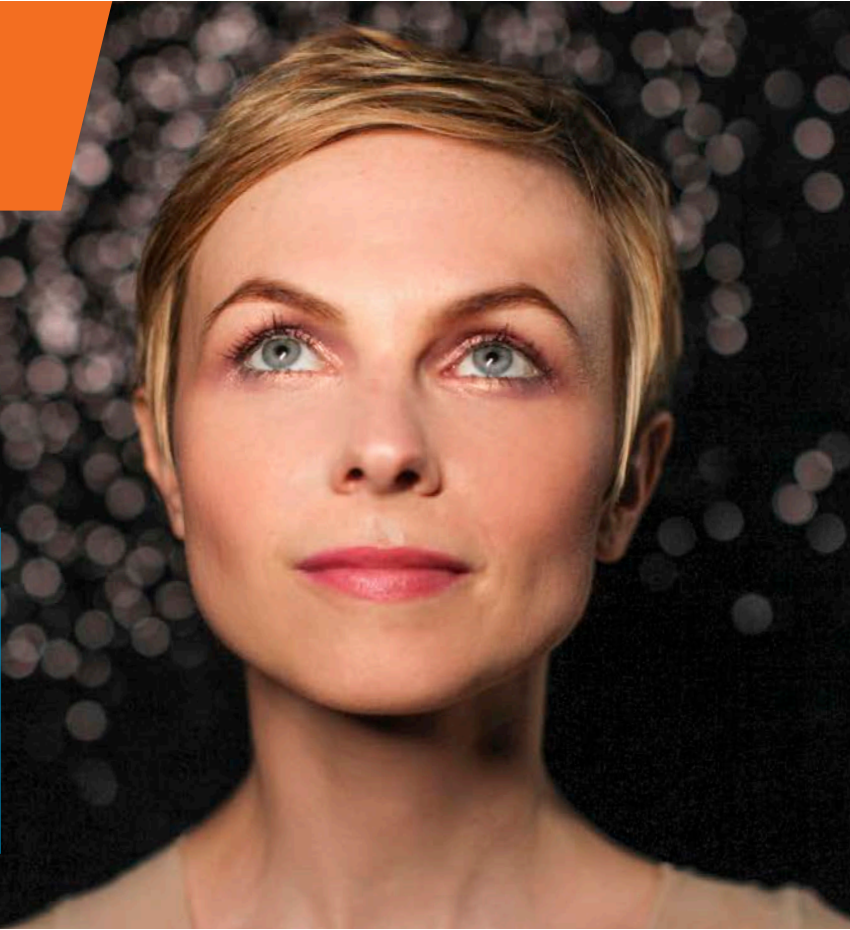


UNIVERSITY OF FLORIDA  
**performing arts**

2023|2024  
SEASON

TICKETS GO ON  
SALE SATURDAY,  
AUGUST 26 AT  
NOON!



You may **PLACE YOUR ORDER BEFORE AUGUST 26**  
via one of the following options:

**PRINT, FILL OUT THIS FORM, AND MAIL**

Phillips Center Box Office  
University of Florida  
PO Box 112750  
Gainesville, FL 32611-2750

**BRING YOUR ORDER FORM TO THE PHILLIPS CENTER BOX OFFICE**

Visit us in person at 3201 Hull Road on the University of Florida campus.

**PHILLIPS CENTER BOX OFFICE HOURS OF OPERATION**

Monday - Friday, noon to 6 p.m. (May - August)  
Monday - Saturday, noon to 6 p.m. (September - April)

**CALL THE PHILLIPS CENTER BOX OFFICE AT 352.392.ARTS (2787)**

NOTE: General public orders placed in advance will be filled in order of receipt on August 26.

**IF YOU WOULD LIKE TO PURCHASE YOUR TICKETS BEFORE THE PUBLIC,  
JOIN AS A UF PERFORMING ARTS AFFILIATE TODAY!**



For more information, please visit  
[performingarts.ufl.edu/giving/affiliate-membership/](https://performingarts.ufl.edu/giving/affiliate-membership/)  
or scan the code at left to complete the process online.

**UF**

TICKETS FOR UFPA'S 2023|2024 SEASON WILL GO ON SALE  
SATURDAY, AUGUST 26 AT NOON.

ORDER ONLINE — PERFORMINGARTS.UFL.EDU OR BY PHONE — 352.392.2787.

PRICING BY VENUE

TICKET PRICES SUBJECT TO CHANGE.

CURTIS M. PHILLIPS CENTER FOR THE PERFORMING ARTS

1 — Pit (Pit seating is limited and subject to availability) | 2 — Front Orchestra (Rows A-P)/Mezzanine/Lower Boxes  
3 — Rear Orchestra (Rows Q-Z)/Upper Boxes | 4 — Balcony

			1	2	3	4
Chucho Valdés Quartet	Wednesday, September 27	7:30 p.m.	\$45	\$45	\$35	\$25
Nobuntu	Sunday, October 15	7:30 p.m.	\$40	\$40	\$30	\$20
Ndlovu Youth Choir	Wednesday, November 1	7:30 p.m.	\$40	\$40	\$30	\$20
Bored Teachers Comedy Tour	Thursday, November 2	7:30 p.m.	\$50	\$50	\$40	\$30
Steep Canyon Rangers	Monday, November 6	7:30 p.m.	\$40	\$40	\$30	\$20
Mean Girls	Wednesday, November 8	8:00 p.m.	—	\$75	\$60	\$45
Big Band Holidays   Jazz @ Lincoln Center	Wednesday, November 29	7:30 p.m.	\$75	\$75	\$60	\$45
Paula Poundstone	Friday, December 1	7:30 p.m.	\$50	\$50	\$40	\$30
American Spiritual Ensemble	Thursday, January 18	7:30 p.m.	\$40	\$40	\$30	\$20
Parsons Dance	Tuesday, January 23	7:30 p.m.	—	\$45	\$35	\$25
Detroit Symphony Orchestra	Tuesday, February 13	7:30 p.m.	—	\$65	\$50	\$40
Come From Away	Wednesday, February 21	7:30 p.m.	\$75	\$75	\$60	\$45
Ladysmith Black Mambazo	Tuesday, February 27	7:30 p.m.	\$45	\$45	\$35	\$25
Step Afrika!	Tuesday, March 5	7:30 p.m.	\$45	\$45	\$35	\$25
Jesus Christ Superstar	Wednesday, March 13	7:30 p.m.	\$75	\$75	\$60	\$45
Natalie MacMaster and Donnell Leahy	Tuesday, March 19	7:30 p.m.	\$40	\$40	\$30	\$20
Pat Metheny Dream Box Tour	Wednesday, March 20	7:30 p.m.	\$60	\$60	\$50	\$40
Academy of St Martin in the Fields	Sunday, March 24	7:30 p.m.	\$75	\$75	\$60	\$45
On Your Feet!	Saturday, March 30	7:30 p.m.	\$75	\$75	\$60	\$45
360 ALLSTARS	Sunday, April 14	4:00 p.m.	\$45	\$45	\$35	\$25
Les Ballets Trockadero de Monte Carlo	Tuesday, April 23	7:30 p.m.	—	\$45	\$35	\$25

UPSTAGE AT THE PHILLIPS CENTER▲

Christian McBride	Thursday, September 14	7:00 p.m. Reserved \$50   9:00 p.m. Reserved \$35
Kat Edmonson	Friday, September 29	7:00 p.m. Reserved \$50   9:00 p.m. Reserved \$35
Joshua Kane	Saturday, September 30	7:00 p.m. Reserved \$50   9:00 p.m. Reserved \$35
Alexa Tarantino Quartet	Friday, November 17	7:00 p.m. Reserved \$50   9:00 p.m. Reserved \$35
Luca Mundaca	Saturday, November 18	7:00 p.m. Reserved \$50   9:00 p.m. Reserved \$35
Roxy Coss	Saturday, January 27	7:00 p.m. Reserved \$50   9:00 p.m. Reserved \$35
Twisted Pine	Thursday, February 1	7:00 p.m. Reserved \$50   9:00 p.m. Reserved \$35
Alfredo Rodriguez Trio	Friday, February 2	7:00 p.m. Reserved \$50   9:00 p.m. Reserved \$35
The String Queens	Thursday, February 8	7:00 p.m. Reserved \$50   9:00 p.m. Reserved \$35
New York Voices	Thursday, February 15	7:00 p.m. Reserved \$50   9:00 p.m. Reserved \$35
Six One Five Collective	Friday, February 16	7:00 p.m. Reserved \$50   9:00 p.m. Reserved \$35
Harold López-Nussa	Thursday, April 11	7:00 p.m. Reserved \$50   9:00 p.m. Reserved \$35
The Crane Wives	Friday, April 12	7:00 p.m. Reserved \$50   9:00 p.m. Reserved \$35

▲ 7:00 p.m. seating includes hors d'oeuvres and cash bar, 9:00 p.m. seating includes desserts and cash bar.

SQUITIERI STUDIO THEATRE

Balourdet Quartet	Sunday, October 22	2:00 p.m.	Reserved \$35
YCA on Tour	Tuesday, January 30	7:30 p.m.	Reserved \$35
Arod Quartet	Sunday, February 25	2:00 p.m.	Reserved \$35
Ying Li, piano	Sunday, March 17	2:00 p.m.	Reserved \$35

# PLACE YOUR ORDER

**IN PERSON** Phillips Center Box Office

**BY MAIL** Phillips Center Box Office  
University of Florida  
PO Box 112750  
Gainesville, FL 32611-2750

**BY PHONE** 352.392.ARTS (2787)

**ONLINE** performingarts.ufl.edu

800.905.ARTS (toll-free within Florida only)

(Beginning Saturday, August 26 at noon)

## UFPA AFFILIATE BUYING PERIODS

Affiliates may purchase a maximum of four tickets per performance prior to the public on the following dates:

Seat Sponsors.....	August 1	Celebrities .....	August 10	Producers .....	August 21
Investors.....	August 7	SuperStars and Performance Sponsors .....	August 14	Directors .....	August 22
Benefactors .....	August 8	Headliners.....	August 15	Managers and Student Affiliates.....	August 24
SuperCelebrities .....	August 9	Stars.....	August 17		

Remember, priority within your Affiliate level is determined by the date your ticket order is received.

**You do not have to wait until the beginning of your buying period to send in your order.**

Name — Last/First

Email Address

Mailing Address — PO Box or Street/City/State/Zip Code

Daytime Phone

Evening Phone

We will do our best to fill your seating needs and requests. If your seating preference is not available, you will be placed in the next best seat or section. Please note if accessible seating is needed. List your seating preference below:

Seating at the Phillips Center/UpStage at the Phillips Center/Squitiere Theatre

Circle method of payment: Check or money order (payable to UNIVERSITY OF FLORIDA) MasterCard Visa Discover Amex

Signature

Print Name as it Appears on Card

Credit Card Number

Expiration Date

**TICKETS FOR UFPA'S 23|24 SEASON EVENTS WILL GO ON SALE SATURDAY, AUGUST 26 AT NOON.  
ORDER ONLINE — PERFORMINGARTS.UFL.EDU OR BY PHONE — 352.392.2787.**

**INDIVIDUAL TICKETS**

	Performance	Date/Time	Price per Ticket	Qty.	Total	For Box Office use only
1						
2						
3						
4						
5						
6						
7						
8						
9						
10						
11						
12						

Affiliate Level \_\_\_\_\_

Name as you wish it to appear in UFPA publications (UFPA Affiliates only) \_\_\_\_\_



**INDIVIDUAL TICKETS**  
TOTAL \$

**Transfer**  
**TICKETS TOTAL**  
to the  
**TOTAL PAYMENT**  
section below.

**PURCHASES TOTAL**  
Record the totals from all applicable sections.

**INDIVIDUAL TICKETS** + **TOTAL** \$  + **AFFILIATE MEMBERSHIP** Processing and Mailing Fee \$ **5.00** = \$

**TOTAL PAYMENT ENCLOSED**