

## UF Performing Arts - Curtis M. Phillips Center for the Performing Arts

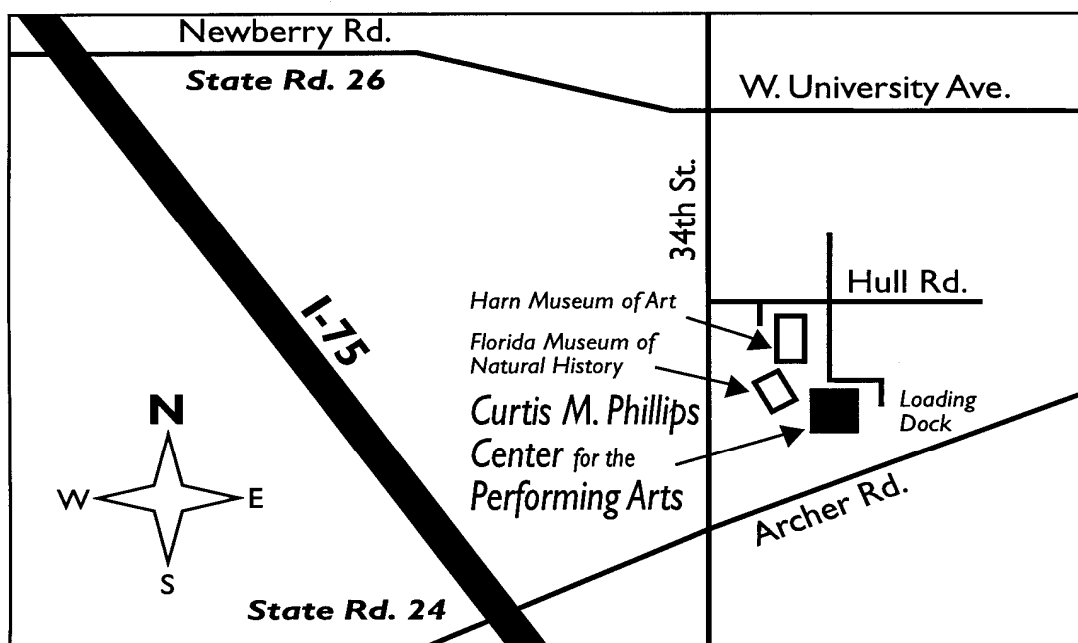
### Facility and Technical Information

**Event / Operations Contacts**      **Ph: 352-392-1900**      **Fax: 352-392-3775**  
Director of Operations      Matthew Cox 273-2474      [mcox@performingarts.ufl.edu](mailto:mcox@performingarts.ufl.edu)  
Technical Director      Jason Degen 273-2475      [jdegen@performingarts.ufl.edu](mailto:jdegen@performingarts.ufl.edu)

**Labor:** The Curtis M. Phillips Center for the Performing Arts is a non-union facility. Florida is a right-to-work state; the Phillips Center as a state university facility abides by state law. Minimum Crew Call is a 2-hour shift.

**Directions:** The Curtis M. Phillips Center for the Performing Arts is located in Gainesville, Florida, at 315 Hull Road, one block east of SW 34th Street. The Phillips Center is next to the Florida Museum of Natural History and the Harn Museum of Art.

SW 34th Street is accessed from I-75 via Archer Road. Take Exit 384 (old Exit 75) off of I-75. Turn east onto Archer Road (right turn if coming from the south; left turn if coming from the north). Once on Archer Road, proceed through three traffic lights. The fourth light will be at the intersection of Archer Road and SW 34<sup>th</sup> Street. Turn left (north) onto SW 34<sup>th</sup> Street. Proceed through two traffic lights. At the third light (Hull Road), turn right. Once on Hull Road, take the second right turn. The Phillips Center will be directly ahead.



**P.O. Box 112750**  
**315 Hull Road**  
**Gainesville, FL 32611-2750**

[www.performingarts.ufl.edu](http://www.performingarts.ufl.edu)

**General Information – Mainstage**

Proscenium 49'-11 1/2" wide x 30'-10" high

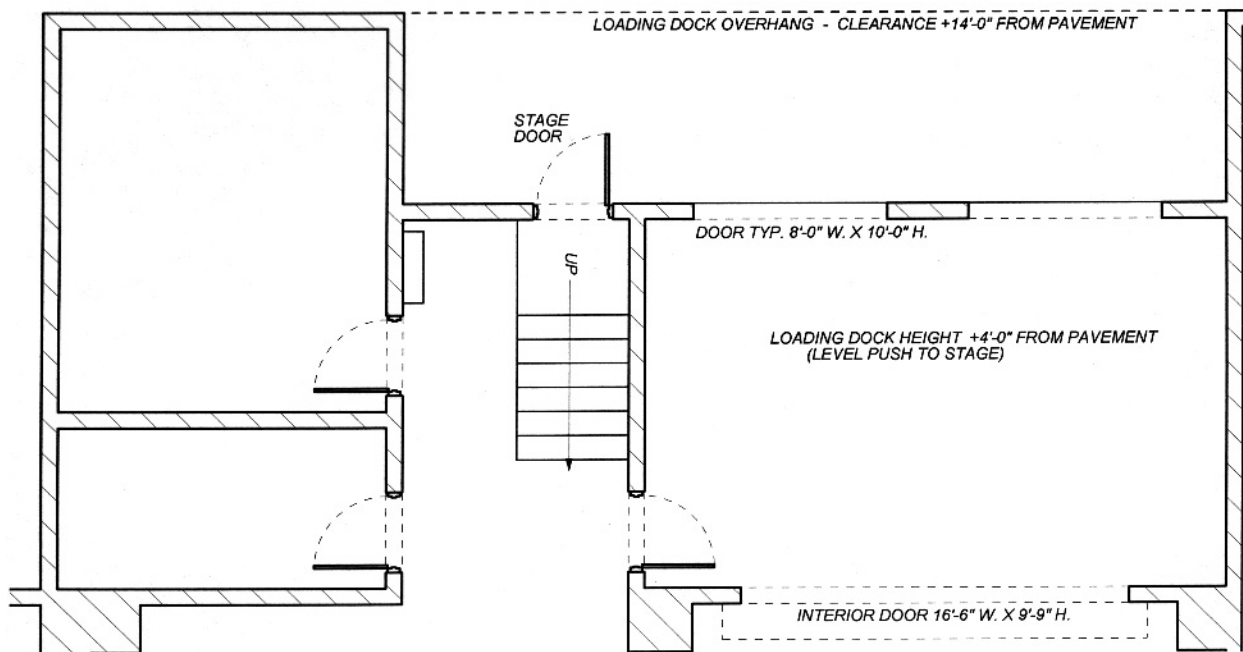
Stage Smoke pocket: 6". **No smoke pocket obstructions. No exceptions!**  
 Plaster Line to: up-stage wall 47'-11"; down-stage edge of fixed stage 2'-1";  
 Main Curtain 1'-4"; first set 2'-4"; last set (#60): 46'-2 1/2".

Offstage (From Center Line) 80'-4" Stage Right to loading bay wall,  
 40'-0" Stage Left to flyrail.

Rigging 61'-0" long battens: high trim 74', low trim 4', travel 70';  
 60 single-purchase counterweighted line-sets;  
 Lines 1-10 at 6" centers; lines 11-60 at 9" centers;  
 Pin rails: 39'-3" height to pipe center from stage floor,  
 36'-0" off Stage Right and Stage Left from Center Line;  
 Grid floor height: 80'.

Stage Floor Black, 1/4" masonite over 2 layers 3/4" plywood, basket-weave sprung floor.

**Loading Access – Mainstage:** The loading dock can accommodate two semi trailers simultaneously. Truck parking should be addressed as early as possible during the advance process to ensure efficient load-ins and -outs. There are two exterior doors, each measuring 8' wide x 10'-0" high, and one interior door measuring 16'-6" wide x 10'-0" high. The loading door closest to the stage door (the North or right-side loading door) is equipped with a floating dock plate. It is a level push to stage.



SCALE: 1/8" = 1'-0"







### **Mainstage – Electrics – Lighting**

**Control:** The lighting system in the Phillips Center Mainstage is dimmer-per-circuit, with 411 circuits (398 @ 20 Amp, and 13 @ 50 Amp). All dimmers are ETC I-86. The lighting control board is an ETC Obsession II 750. The lighting control booth is located at the rear of the house, orchestra level, slightly house-right-of-center.

**Road Power:** There are two (2) 400 Amp three-phase company switches located 40-feet stage-right-of-center. The FOH intercept panel is located next to the power. All FOH circuits transfer.

**FOH Positions:** (FOH instruments do not move; measurements from Plaster Line)

Catwalk #1 – 42’ out / 56’ up	16 Source Four 19-degree, 750w
Catwalk #2 – 66’ out / 56’ up	28 Source Four 10-degree, 750w
Catwalk #3 – 90’ out / 56’ up	7 Altman 10-degree, 1kw
Upper Boxes – 54’ out / 41’ up	18 (9 per side) Source Four 19-degree, 575w 2 (1 per side) PAR-64, 1kw (warmers)
Lower Boxes – 22’ out / 25’ up	24 (12 per side) Source Four 19-deg., 575w
Balcony Rail – 62’ out / 15’ up -	9 Source Four 19-degree, 575w

**Mainstage Instrument Inventory:** (Excludes FOH units)

120	Source Four 26-degree ERS, 750w
80	Source Four 36-degree ERS, 750w
20	Source Four 50-degree ERS, 750w
16	Source Four 19-degree ERS, 750w
64	Source Four Parnel, 750w
66	Source Four PAR, 750w (with VNSP, NSP, MFL, and WFL lenses)
23	PAR-64, 1000w (VNSP, NSP, MFL, and WFL lamps available)
20	Altman T3 Striplights (3-circuit, 6-light)
1	ETC Obsession II 750 lighting control console
2	Strong Super Trouper II 2k Xenon Follow Spotlights

**Black Box Instrument Inventory**

10	Altman 4.5x6, 500w
20	Altman 6x9, 750w
20	Altman 6x12, 750w
24	Altman 8” Fresnel, 1kw
15	Colortran 6” Open face fixture, 750w
1	ETC Expression 24/48 memory/manual lighting control console

**House Hang:** There is no permanent house hang. The house will combine several touring plots into one and supplement accordingly, so there will usually be a substantial plot in the air. Please contact the Technical Director with specific lighting requirements.

**Gel:** Most house gel is Roscolux. We do carry a small Lee inventory. No color correction filters are available for film or video. Gam is special-ordered.

**Mainstage Circuit Distribution:** (all distribution is stage pin)

**FOH**

Catwalk #1 - 24 - 20 Amp circuits - Circuit #'s 25-48  
Catwalk #2 - 24 - 20 Amp circuits - Circuit #'s 1-24  
Catwalk #3 - 24 - 20 Amp circuits - Circuit #'s 25-48  
Upper Box House Left - 12 - 20 Amp circuits - Circuit #'s 78-89  
Upper Box House Right - 12 - 20 Amp circuits - Circuit #'s 66-77  
Lower Box House Left - 12 - 20 Amp circuits - Circuit #'s 90-101  
Lower Box House Right - 12 - 20 Amp circuits - Circuit #'s 54-65  
Balcony Rail - 5 - 20 Amp circuits - Circuit #'s 49-53

**Over-stage**

Stage Right Pin Rail - 21 multi-cables with 7 to 12 circuits each,  
177 total circuits - Circuit #'s 102-278  
Stage Right Pin Rail - 5 multi-cables with 8 circuits each for booms,  
40 total circuits - Circuit #'s 279-318  
Stage Left Pin Rail - 5 multi-cables with 8 circuits each for booms,  
40 total circuits - Circuit #'s 319-358

**Stage Level**

Down Stage Left - Wall box with four (4) circuits - Circuit #'s 359-362  
Down Stage Right - Wall box with four (4) circuits - Circuit #'s 363-366  
Up Stage Right - Wall box with six (6) circuits - Circuit #'s 367-372  
Up Stage Center - Wall box with six (6) circuits - Circuit #'s 373-378  
Up Stage Left - Wall box with six (6) circuits - Circuit #'s 379-384

**Orchestra Pit**

12 Footlight circuits - Circuit #'s 385-396  
2 Miscellaneous circuits (no specific designation) - Circuit #'s 397-398

**University Auditorium Instrument Inventory**

**Overstage**

18- Source Four Par, 575w (with VNSP, NSP, MFL, and WFL lenses)

**FOH Lighting Positions**

12 (6 per side)- Source Four 19-degree, 575w

<u>STAGE RIGHT</u>		
252-260	9	GR
261-269	9	GR
270-278	9	CYC
231-237	7	CYC
238-244	42'	7
245-251		7
311-318	8	Boom 5
210-216	7	396
217-223	33'	395
224-230	7	394
303-310	8	Boom 4
186-193	25'	393
194-201		392
202-209		391
295-302	8	Boom 3
162-169	8	390
170-177	17'	389
178-185		388
287-294	8	Boom 2
138-145	8	387
146-153	10'	386
154-161		385
279-286	8	Boom 1
102-113	12	113
114-125	6'	125
126-137		137
<u>DWN. STAGE WALL</u> 363 - 366		

UP STAGE WALL  
R      C      L  
367-372 • 373-378 • 379-384

<u>STAGE LEFT</u>		
351-358	8	Boom 5
343-350	8	Boom 4
335-342	8	Boom 3
327-334	8	Boom 2
319-326	8	Boom 1
<u>DWN. STAGE WALL</u> 359 - 362		

PHILLIPS CENTER  
CIRCUIT  
MAGIC SHEET  
  
Johnnywatts 2003 ©

House Lites  
480-501

HOUSE LEFT  
  
Low Box  
90 - 101  
  
High Box  
80 - 89

FOH 1  
25 - 48  
  
FOH 2  
78 - 79 • 1 - 24 • 76 - 77  
  
FOH 3  
25 - 48  
  
BALC. RAIL  
49 - 53

HOUSE RIGHT  
  
Low Box  
54 - 65  
  
High Box  
66 - 75

<b><u>FOH 1</u></b>																								
25	26	27	28	29	30	31	32	33	34	35	36		37	38	39	40	41	42	43	44	45	46	47	48

<b><u>FOH 2</u></b>																																		
76	77	1	2	•	3	4	5	6	•	7	8	9	10	•	11	12		13	14	•	15	16	17	18	•	19	20	21	22	•	23	24	78	79

<b><u>FOH 3</u></b>																								
25	26	27	28	29	30	31	32	33	34	35	36		37	38	39	40	41	42	43	44	45	46	47	48

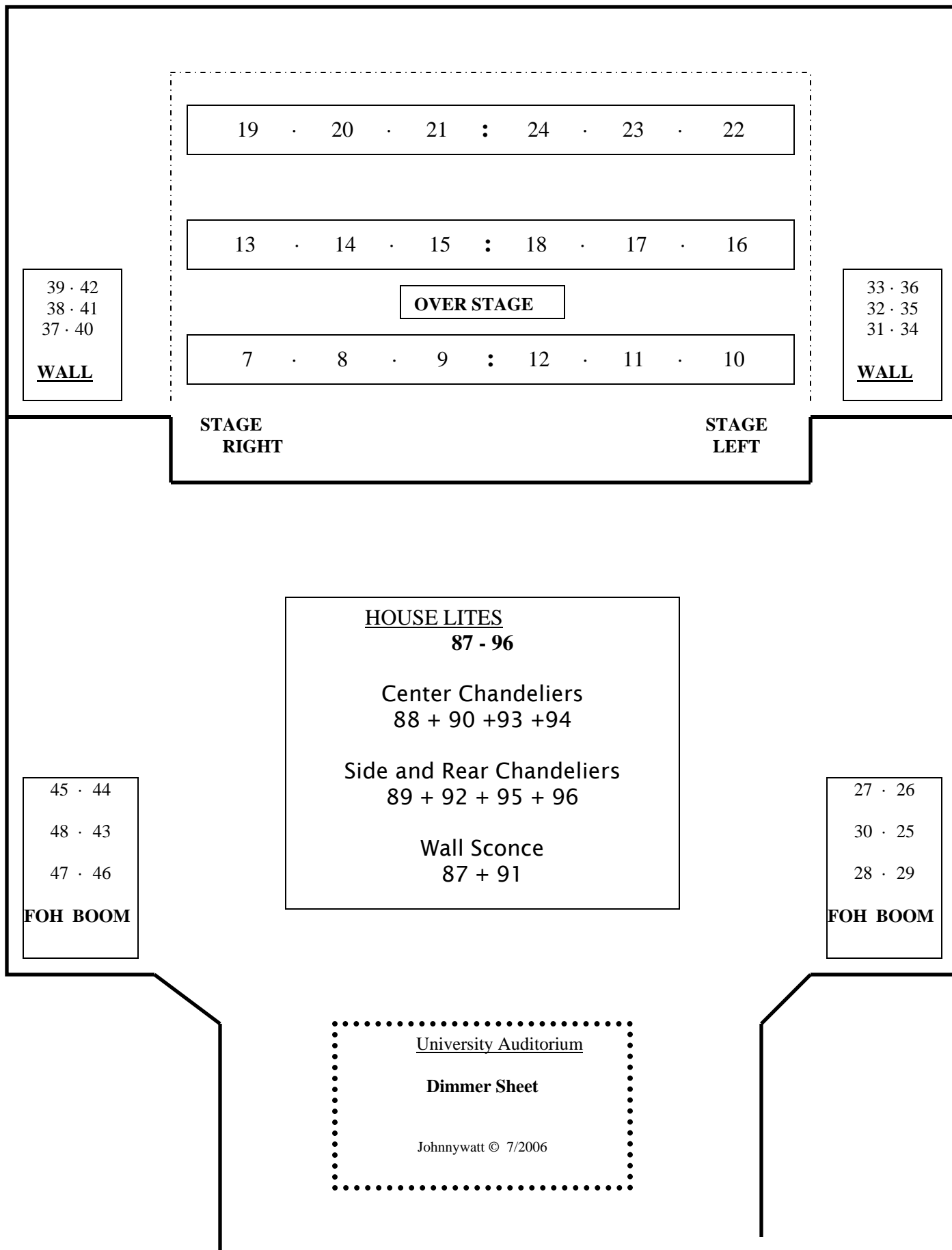
<b><u>STAGE LEFT</u></b>	
<b><u>High Box</u></b>	
69	68
71	70
-----	
73	72
67	66
75	74
<b><u>Low Box</u></b>	
55	54
57	56
59	58
-----	
61	60
63	62
65	64

<b><u>BALC. RAIL</u></b>				
49	50	51	52	53

<b><u>HOUSE LITES</u></b>
<b>480 - 501</b>

PHILLIPS CENTER
F O H MAGIC SHEET
<small>Johnnywatts 2003 ©</small>

<b><u>STAGE RIGHT</u></b>	
<b><u>High Box</u></b>	
80	81
82	83
-----	
84	85
88	89
86	87
<b><u>Low Box</u></b>	
90	91
92	93
94	95
-----	
96	97
98	99
100	101



**Mainstage – Electrics – Audio / Video**

**Main P.A. System**

<b>Console</b>	1 – DigiDesign D-Show Profile 48x24x8x3
<b>Drive Rack</b>	3 – BSS Minidrives (FDS 366) 1 controls flown KF 650's, 1 controls ground KF 650's, 1 controls hearing impaired, backstage & lobby feeds, subs
	2 – Klark Teknik DN360's 1 for flown KF 650's 1 for ground stacked KF 650's
	1 – Ashly Protea 4-channel digital graphic 31 band graphic EQ Provides equalization for all delay zones
<b>Playback</b>	2 – Sony MDS-E10 Mini-Disc Player 2 – Marantz PMD 331 Compact Disc Player

<b>Amplifiers</b>	7 – Crown 2400 - mains 1 – Crown 3600 V2 - subs 2 – JBL ES600 6 – JBL ES 300 - monitors 2 – JBL 6290 - subs
-------------------	---

<b>Speakers - Proscenium Center, Flown</b>	4 – JBL 2404H 3 – JBL 2445J w/ 60 x 40 HF horns 2 – JBL 15" 2225H
--	---

<b>Speakers - Proscenium Left &amp; Right, Flown</b>	1 – EAW KF650ISP each side
--	----------------------------

<b>Speakers – Stage Left and Right, Floor Stacks</b>	1 – EAW SB850 each stack 2 – EAW KF650ISP each stack
--	---

<b>Speakers – 3<sup>rd</sup> Catwalk, Flown, Balcony Fills</b>	2 – EAW KF650ISP (on delay)
--	-----------------------------

<b>Microphones</b>	10 – Shure SM58 4 – Shure SM57 3 – Sennheiser MD431 (switched) 4 – Sennheiser MD 431 (unswitched) 2 – Shure SM90 2 – Shure SM91 5 – Shure SM81 5 – Rode NT-1 4 – Shure UHFR receiver, handheld transmitter, Beta-58 capsule
--------------------	---

<b>Miscellaneous</b>	2 – Rapco DB-100 DI boxes 3 – Radial JDI DI Boxes 1 – Radial Pro D2 DI Boxes 1 – David Gage bass pick-up 2 – Proco IT-1 Isolation Transformers – Assorted microphone stands, microphone and speaker cable
----------------------	--

***Monitor Speakers***     4 – EV S1202 – Box monitor  
                                  2 – EV 1512 Box monitor  
                                  2 – EV SH1810 – Bi-amplified monitor  
                                  2 – EV FM1202 – Wedge monitor

***Additional Amplifiers***

6 – JBL ES 300 2-Channel Amp  
3 – JBL ES 600 2-Channel Amp  
5 – JBL 6290

***Assistive Listening System***

A Gentner FM transmitter provides assistive listening for the hearing impaired.

***Program / Page System***

Program/page system controlled from the stage manager's console, located stage right. Input feeds from stage, main audio or stage reference. System feed throughout backstage.

***On-Stage Communications***

A 2-channel Telex intercom system is available. Power supplies located in sound booth. Headsets and belt packs are available at any needed location.

***Road Power – Sound***

One 200 Amp, three phase disconnect is located 50' stage right. Isolated.

***Video***

1 – Video monitor camera	2 – Video distribution amplifiers
2 – Color Lobby monitor w/patchable audio	4 – Black and White monitors
1 – 8'x 8' front proj screen	1 – Projector: Christie 6500-lumen

### ***Mainstage – Rigging***

The Mainstage is equipped with a fly system consisting of 60 single-purchase counter-weighted lines. The arbor capacity is 1500 pounds. Each batten is 61 feet long, has seven (7) ¼” 7x19 aircraft cable lift lines and consists of schedule #40 1 ½” pipe. All linesets are controlled from the locking rail, which is located stage left at deck level. Locking rail is 39’-10” from center line. Loading rail is 72’ above the deck.

There are six (6) permanent orchestra shell pieces on batten numbers 4, 14, 21, 28, 36, and 43. These lines cannot be cleared or moved. There are five (5) sets of masking (one border and two legs per set). Legs are 34’ high x 11’ wide. Borders are 10’ high x 61’ wide. All masking is black velour with no fullness. The following are hung at all times (all 34’ high x 61’ wide): white cyc, black scrim, black backdrop (velour, no fullness), black traveller (hanging on lineset 34; cannot be moved)

The main curtain travels and guillotines. It consists of two panels 34’ high x 35’ wide with 75% fullness. The curtain is not automated; two flymen are required to operate it.

There are pin rails stage left and right. The rails are 39’-3” to pipe center above the deck and 36’-0” offstage from center line, stage left and right. House overhead circuits originate from the stage right pin rail.

\*\* There are 2 CM Lodestar 1 Ton chain motors in house. Please notify us well in advance if you are interested in using them for your production.

### ***Mainstage – Stage Equipment***

Music Equipment:     250 Black orchestra chairs, padded and armless  
                              120 Wenger black music stands  
                              1 Conductor's podium  
                              1 Conductor's stand  
                              100 Music stand lights

Pianos:                     *Rental fees apply to use of each piano; tuning cost is additional.*  
                              1 9' Steinway 9' concert grand piano.  
                              1 7' Yamaha Disklavier II piano.  
                              1 Yamaha upright piano.

Miscellaneous:         2 Genie AWP 36' lift  
                              30 SICO 4'x8' risers in the following sizes:  
                                   6 @ 8"; 10 @ 16" to 24"; 5 @ 24" to 32"; 9 @ 32" to 40"  
                              2 single step units  
                              2 2-step units  
                              2 4-step units (with permanent handrails)

**NOTE:** Personnel lifts used at the Phillips Center for the Performing Arts **must be operated according to the manufacturer's specifications.** For Genie AWP lifts: outriggers must be installed at all times when the lift is raised; and the lift must be lowered when rolling to position.

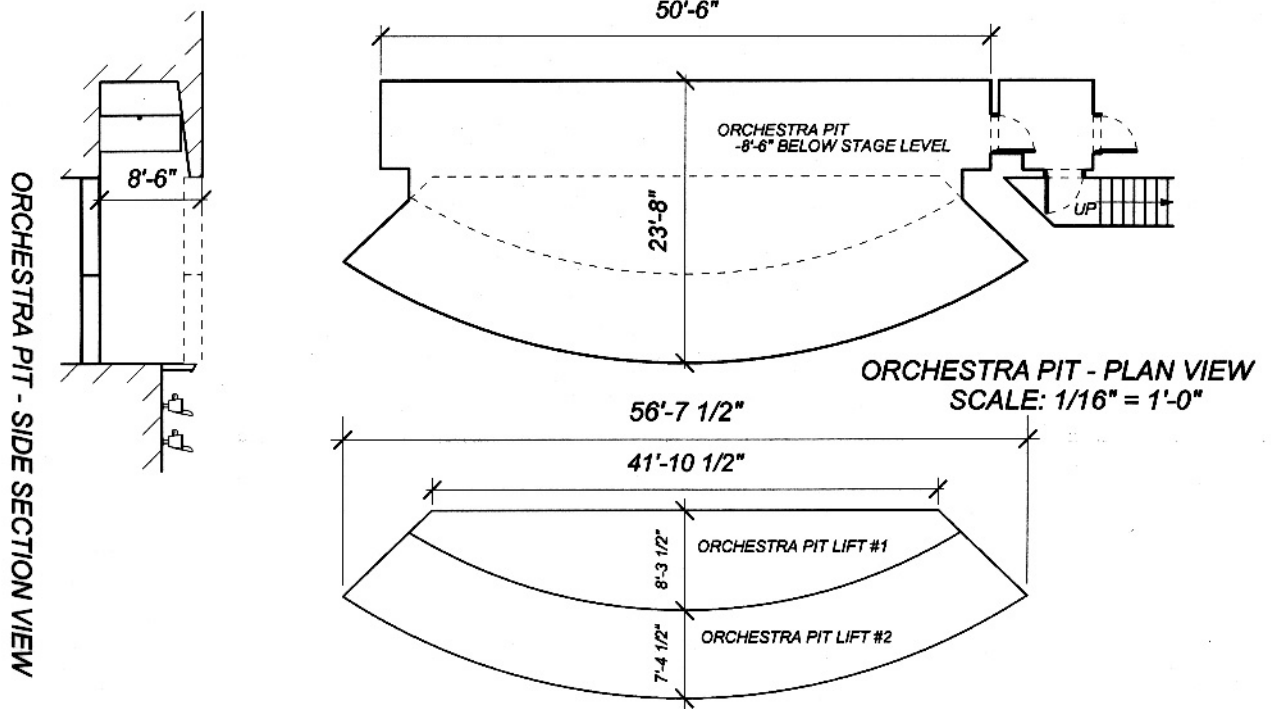
## Rigging - Line Schedule

Measurement from Plaster Line
-------------------------------

Line Set	Distance from Plaster Line	Notes	Line Set	Distance from Plaster Line	Notes
Main	1'-4"	Main Curtain			
1	2'-4"		31	23'-5 ½"	
2	2'-10"		32	24'-2 ½"	
3	3'-4"		33	24'-11 ½"	
4	3'-10"	Orchestra Shell	34	25'-8 ½"	
5	4'-4"		35	26'-5 ½"	
6	4'-10"		36	27'-2 ½"	Orchestra Shell
7	5'-4"		37	27'-11 ½"	
8	5'-10"		38	28'-8 ½"	
9	6'-4"		39	29'-5 ½"	
10	6'-10"		40	30'-2 ½"	
11	7'-5 ½"			30'-10"	Outrigger
12	8'-2 ½"		41	31'-5 ½"	
13	8'-11 ½"		42	32'-2 ½"	
14	9'-8 ½"	Orchestra Shell	43	32'-11 ½"	Orchestra Shell
	10'-2 ½"	Outrigger	44	33'-8 ½"	
15	10'-11 ½"		45	34'-5 ½"	
16	11'-8 ½"		46	35'-2 ½"	
17	12'-5 ½"		47	35'-11 ½"	
18	13'-2 ½"		48	36'-8 ½"	
19	13'-11 ½"		49	37'-5 ½"	
20	14'-8 ½"		50	38'-2 ½"	
21	15'-5 ½"	Orchestra Shell	51	38'-11 ½"	
22	16'-2 ½"		52	39'-8 ½"	
23	16'-11 ½"		53	40'-5 ½"	
24	17'-8 ½"			41'-1"	Outrigger
25	18'-5 ½"		54	41'-8 ½"	
26	19'-2 ½"		55	42'-5 ½"	
27	19'-11 ½"		56	43'-2 ½"	
	20'-7"	Outrigger	57	43'-11 ½"	
28	21'-2 ½"	Orchestra Shell	58	44'-8 ½"	
29	21'-11 ½"		59	45'-5 ½"	
30	22'-8 ½"		60	46'-2 ½"	

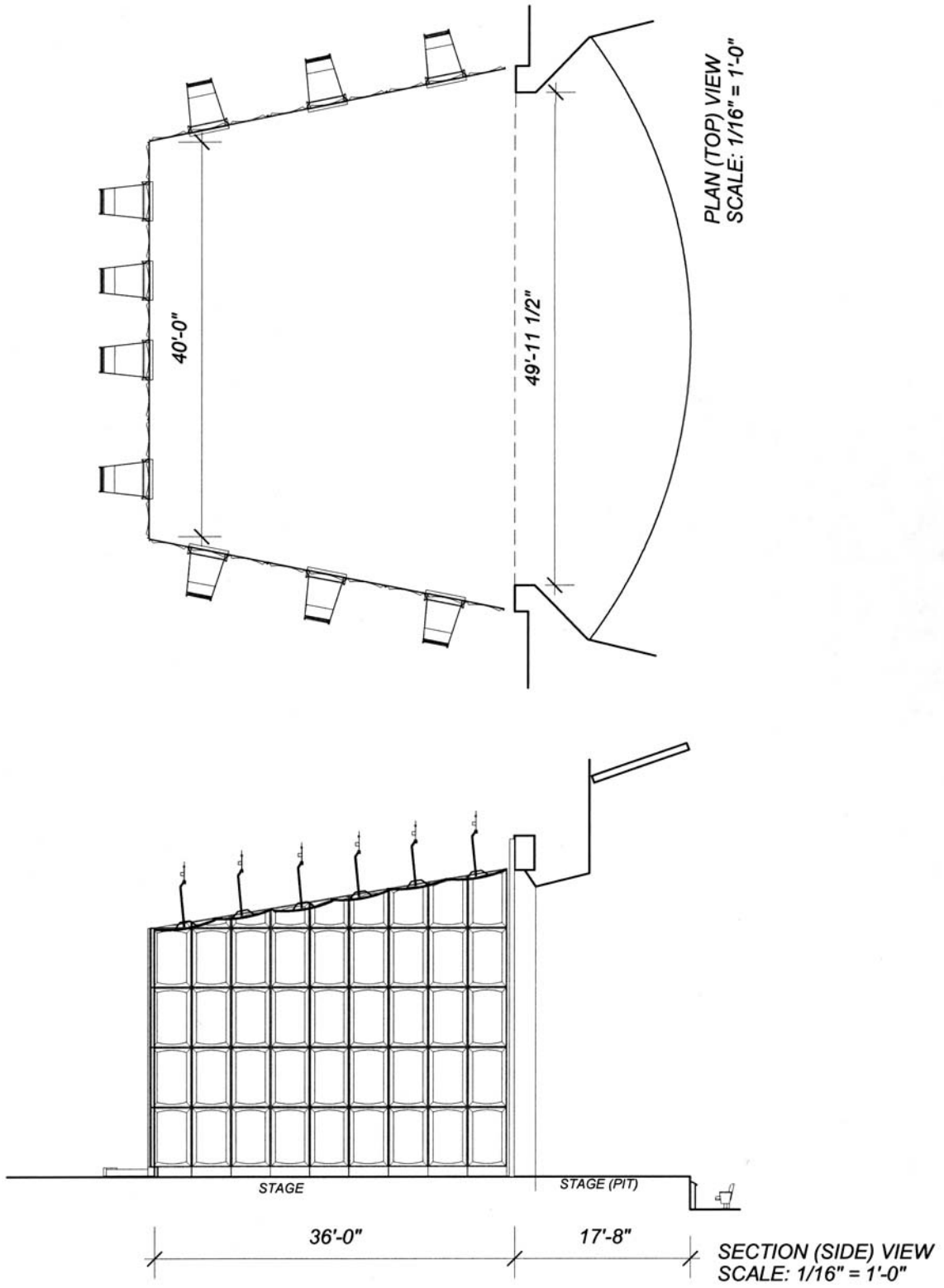
**Mainstage – Orchestra Pit Lifts**

- Type: Gala lift with five 18" Spiralift units (tubular thrust screws)
- Operation: The pit lifts are operated via cabled remote or from a console DSL. The two lift sections can operate independently or in synch.
- Load: Lifting - 50 lb/square foot; Sustaining - 100 lb/square foot  
 Speed: 10 feet/minute; Total Travel: 8'-6"
- Stops: Pit can be stopped at any point in its full range of travel.



**Mainstage – Acoustic Reinforcement**

The University of Florida Center for the Performing Arts owns a fully enclosed, custom orchestra shell. The shell is constructed of fiberglass reinforced gypsum. There are nine tower units and six ceiling pieces. The shell configuration can be 12', 24' or 36' deep. For an orchestral set-up, the seating from the orchestra pit may be removed, creating an apron on which the conductor, piano, or down stage string section may be placed.



**Wardrobe Room and Dressing Rooms**

There is one wardrobe room located backstage. Located in this room are one washer, one dryer, one steamer, irons, one sewing machine, one surger and other basic sewing supplies. Use of the wardrobe area needs to be scheduled ahead of time with the Operations Director.

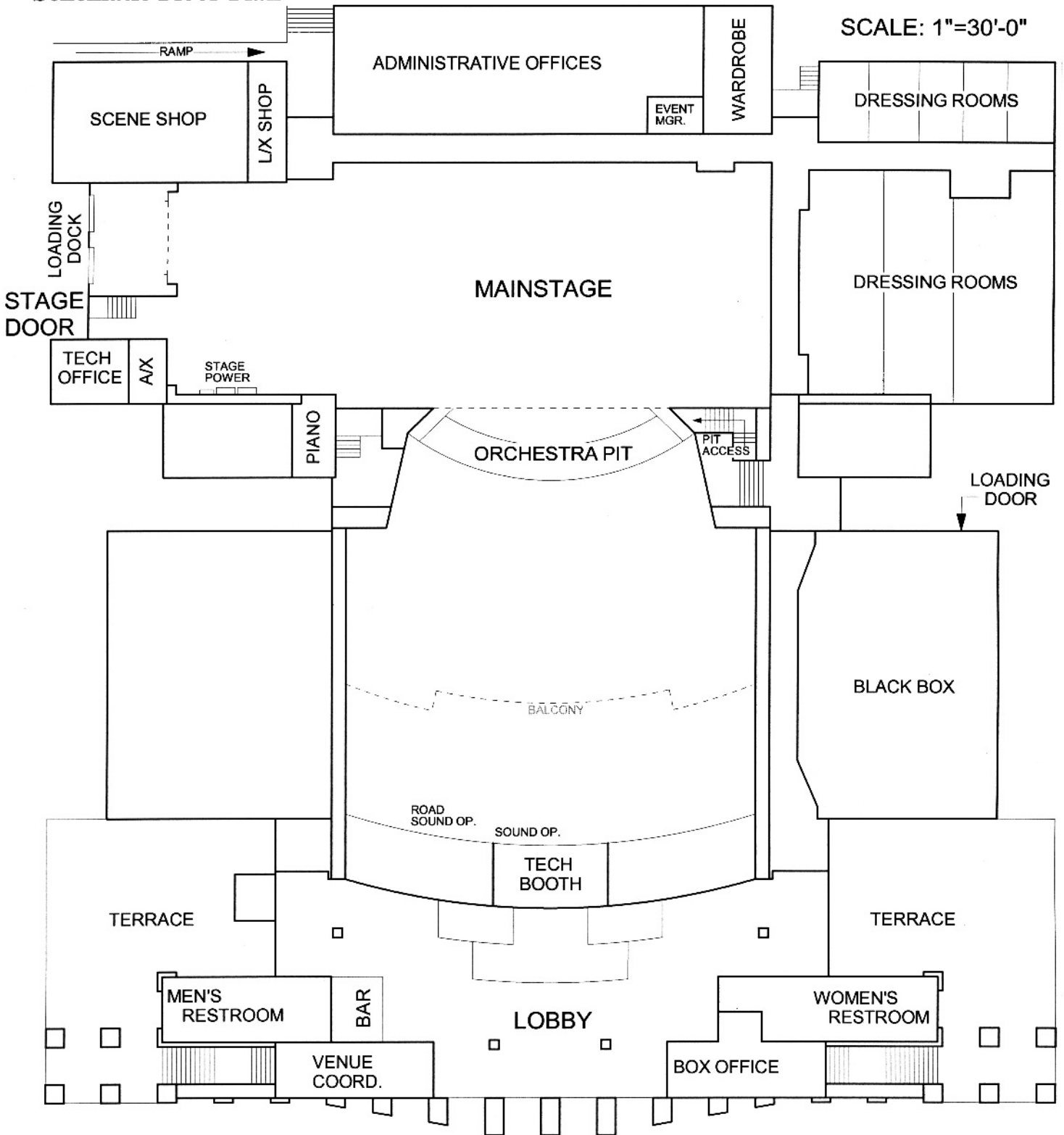
There are a total of eight (8) dressing rooms. With the exception of the musicians dressing room (#115), each dressing room has lit mirrors, sinks and showers. Room 115 is used as the dressing room for renters of the black box theater. This room may be available for use if the Black Box Theatre is not in use at the time of your event. It also often serves as a hospitality room where catering is served, or as a production office.

All dressing rooms have patchable phone lines. A rental fee applies for phones.

Room number	Capacity	Showers	Toilets	Sinks
116	1-2	1	1	1
118	1-2	1	1	1
120	2-4	1	1	1
122	2-4	1	1	1
124	2-4	1	1	1
121	21	3	2/1 lav	4
125	27	3	2/1 lav	4
115	25	0	2 men's/2 women's	2

There is no smoking in or within 50 feet of any state building in Florida. Please advise your cast and crew that this rule will be strictly enforced.

### Schematic Floor Plan



**Mainstage Capacity: Maximum – 1760**

- Orchestra - 929
- Orchestra Pit- 72
- Mezzanine - 278
- Balcony - 401
- Upper Boxes - 40
- Lower Boxes – 40

ADA Accessible Seating – 26, included in above totals

## Orchestra Level

